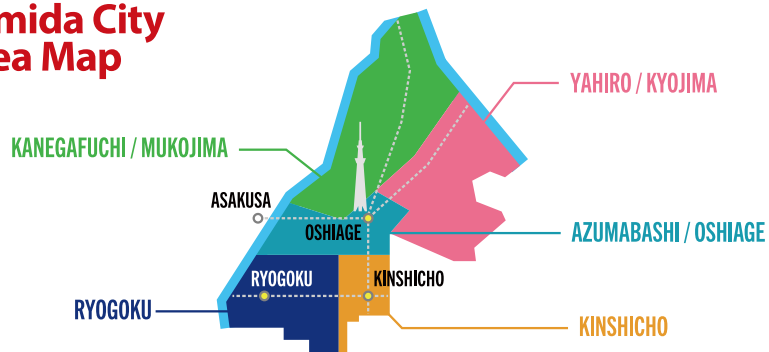


## Sumida City Area Map



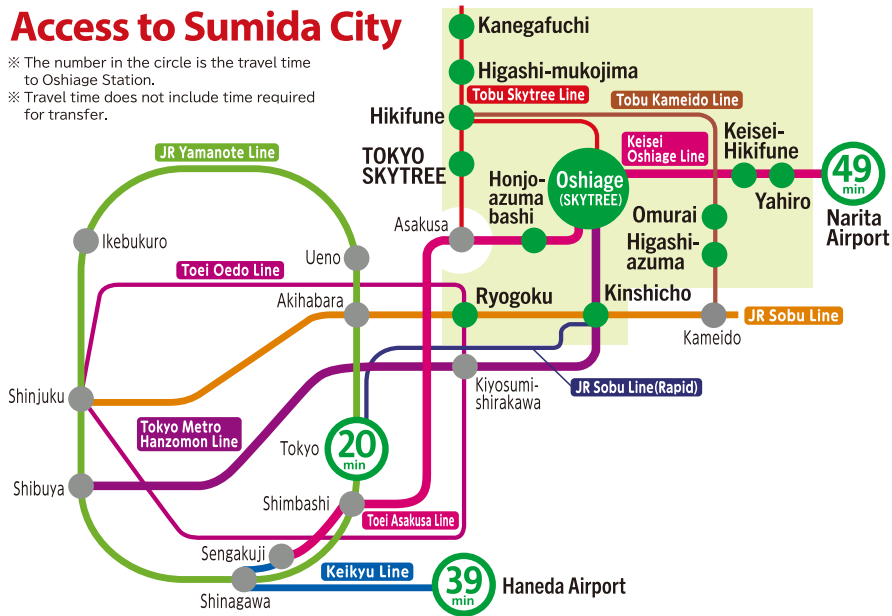
Includes **Muslim & vegetarian friendly** restaurants!

# Oishii Sumida Tokyo

*Visit Sumida, Take a Walk & Enjoy Eating*

## Access to Sumida City

※ The number in the circle is the travel time to Oshiage Station.  
 ※ Travel time does not include time required for transfer.



[oishii-sumida.tokyo](http://oishii-sumida.tokyo)



[visit-sumida.jp](http://visit-sumida.jp)

Issued by Sumida City (Cooperation: Sumida Tourism Association)

Published in February 2025

発行：墨田区 協力：墨田区観光協会

Discover Sumida's top eats!  
 All restaurants listed in this guidebook  
 have **English menus.**

# Ryogoku

両国

**Try This!** Chanko-nabe  
You can enjoy Chanko-nabe at restaurants displaying this mark.



Chanko-nabe is a hotpot dish traditionally eaten by sumo wrestlers. Ryogoku is home to many sumo stables.



Enjoy authentic Japanese cuisine in Ryogoku.

Legend : Police Box Hospital Tourist Information Center

See more information on restaurants in Ryogoku here.



<p><b>1</b> Yakatabune Tsurishin 屋形船 釣新 1-3-11 Honjo <b>JAPANESE</b></p>	<p><b>11</b> Honjo Kaeru Honpo 本所かえる本舗 1-8-6 Kamezawa <b>JAPANESE</b></p>	<p><b>20</b> Cafe bar samasama カフェバー サマサマ 3-24-15-2F Ryogoku <b>BARS</b></p>
<p><b>2</b> Honjo Sunaba 本所 砂場 1-31-8 Honjo <b>NOODLES</b></p>	<p><b>12</b> J-Flow ジェイ フロウ 3-13-6-2F Kamezawa <b>BARS</b></p>	<p><b>21</b> Vietnam restaurant Hoian ベトナム料理 ホイアン 4-32-16-2F Ryogoku <b>CASUAL DINING</b></p>
<p><b>3</b> SUNSHINE STATE ESPRESSO サンシャイン ステイト エスプレッソ 1-34-7 Honjo <b>CAFES</b></p>	<p><b>13</b> Shake Tree Burger &amp; Bar シェイクツリーバーガー &amp; バー 3-13-6 Kamezawa <b>CASUAL DINING</b></p>	<p><b>22</b> Nakataya Chaho 中田屋茶舗 4-1-12 Ryogoku <b>SHOPS</b></p>
<p><b>4</b> Rcafe 192 アールカフェ 192 1-9-2 Yokoami <b>CAFES</b></p>	<p><b>14</b> Ryogoku Menchi 両国メンチ 2-18-3 Ryogoku <b>SHOPS</b></p>	<p><b>23</b> Kyoushi Honoka 蕎麦 穂乃香 1-25-7 Midori <b>NOODLES</b></p>
<p><b>5</b> Ryogoku Terrace 両国テラス 1-12-21 Yokoami <b>CASUAL DINING</b></p>	<p><b>15</b> Beer Club POPEYE 麦酒倶楽部 ポパイ 2-18-7 Ryogoku <b>BARS</b></p>	<p><b>24</b> Edomuten Kumahachi 江戸麵 熊八 2-15-1 Midori <b>NOODLES</b></p>
<p><b>6</b> Thai Restaurant DOIKAM タイレストラン ドイカム 1-26-5 Ishiware <b>CASUAL DINING</b></p>	<p><b>16</b> CHANKO TOMOEGATA ちゃんこ 湯 2-18-15 Ryogoku <b>JAPANESE</b></p>	<p><b>25</b> CHILL OUT COFFEE &amp;... RECORDS チルアウトコーヒー&amp;レコード 2-17-8 Midori <b>CAFES</b></p>
<p><b>7</b> Chuka Yoshoku Shokudo Ayuta 中華洋食堂 あゆた 1-36-2 Ishiware <b>CASUAL DINING</b></p>	<p><b>17</b> MIKIYA みぎや 3-9-1 Ryogoku <b>JAPANESE</b></p>	<p><b>26</b> Okonomiyaki. Monja Donguri お好み焼き・もんじゃ どんぐり 3-7-20 Midori <b>JAPANESE</b></p>
<p><b>8</b> FUGU CHANKO TORIYOSI ふぐ ちゃんこ鳥義 3-17-3 Ishiware <b>JAPANESE</b></p>	<p><b>18</b> Antique Café Wool Club アンティークカフェ ウール倶楽部 3-21-5 Ryogoku <b>CAFES</b></p>	<p><b>27</b> Misuzu みすず 3-1-11 Tatekawa <b>SHOPS</b></p>
<p><b>9</b> UNAGI KAWAYUU うなぎ川勇 3-30-9 Ishiware <b>JAPANESE</b></p>	<p><b>19</b> India Nepal Restaurant Samzana &amp; Bar インドネパールレストラン サムジャナ&amp;バー 3-24-1 Ryogoku <b>CASUAL DINING</b></p>	<p><b>28</b> SUMIBI YAKITORI HAJIME 炭火焼とり はじめ 3-17-1 Kikukawa <b>JAPANESE</b></p>
<p><b>10</b> GUEST HOUSE café&amp;bar SaKURa ゲストハウス カフェアンドバー サクラ 4-20-4 Ishiware <b>BARS</b></p>	<p> No Pork  Free Wi-Fi  Muslim-friendly menu available  Vegetarian dishes available</p>	

If you are craving Japanese cuisine...



Tempura Unagi Sashimi Green Tea Soba

# Kinshicho

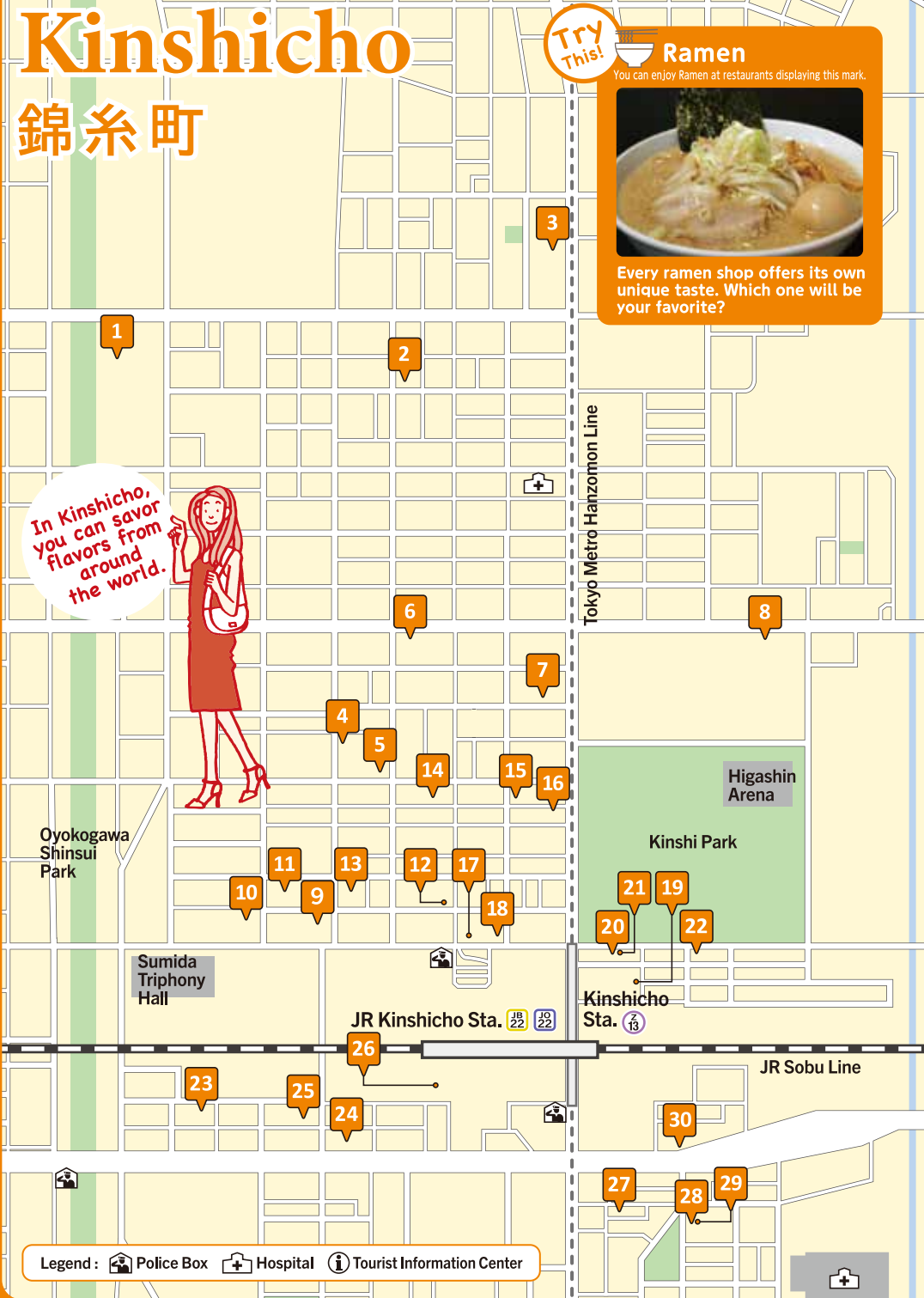
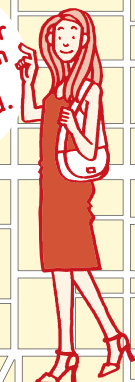
## 錦糸町

**Try This!** **Ramen**  
You can enjoy Ramen at restaurants displaying this mark.



Every ramen shop offers its own unique taste. Which one will be your favorite?

In Kinshicho, you can savor flavors from around the world.



Legend: Police Box Hospital Tourist Information Center

See more information on restaurants in Kinshicho here.



<p><b>1 SASAYA CAFE</b> ささやカフェ 1-1-10 Yokokawa <b>CAFES</b></p>	<p><b>11 TORIKI</b> とり喜 1-8-13 Kinshi <b>JAPANESE</b></p>	<p><b>21 SUMIYAKI JINGISUKAN MAMEKICHI</b> 炭焼ジンギスカン まめ吉 4-14-5 Kinshi <b>CASUAL DINING</b></p>
<p><b>2 BERTH COFFEE ROASTERY "Haru"</b> バース コーヒー ロースタリー ハル 2-7-2 Yokokawa <b>CAFES</b></p>	<p><b>12 Petit Vert</b> プティヴェール 2-5-10 Kinshi <b>CASUAL DINING</b></p>	<p><b>22 Washoku Dining Egushi</b> 和食 Dining 笑食 4-12-8 Kinshi <b>JAPANESE</b></p>
<p><b>3 café Kohana</b> カフェ こはな 3-11-14 Yokokawa <b>CAFES</b></p>	<p><b>13 Kinshicho Komachi Shokudo</b> 錦糸町 小町食堂 2-6-3 Kinshi <b>JAPANESE</b></p>	<p><b>23 Tori Wain ANDO</b> 鶏和飲 安藤 1-14-4 Kotobashi <b>JAPANESE</b></p>
<p><b>4 Wafuizakaya koto</b> 和風居酒屋 琴 2-1-3 Taihei <b>JAPANESE</b></p>	<p><b>14 TIG CAFE</b> ティーアイジーカフェ 2-13-5-1F Kinshi <b>CAFES</b></p>	<p><b>24 HUSTLE RAMEN HONMA KINSHICHO</b> ハッスルラーメンホンマ 錦糸町店 2-16-8 Kotobashi <b>NOODLES</b></p>
<p><b>5 wkwk &amp; coffee</b> ウキウキコーヒー 2-1-11 Taihei <b>CAFES</b></p>	<p><b>15 Curry Leaves Cafe &amp; Restaurant</b> カレーリーブス カフェ &amp; レストラン 3-13-1-1F Kinshi <b>CASUAL DINING</b></p>	<p><b>25 Tokyo Muslim Chinese Restaurant</b> 東京ムスリム飯店 2-18-6 Kotobashi <b>CASUAL DINING</b></p>
<p><b>6 Sabaichai Thai Restaurant</b> サバイチャイ タイ屋台 2-8-3 Taihei <b>CASUAL DINING</b></p>	<p><b>16 Dosa</b> ドサ 3-13-10 Kinshi <b>CASUAL DINING</b></p>	<p><b>26 SANZENRI</b> 三千里 3-14-13 Kotobashi <b>CASUAL DINING</b></p>
<p><b>7 Wanogohan Mikazuki</b> 和のごはん みかづき 3-8-9 Taihei <b>JAPANESE</b></p>	<p><b>17 Sumibi Yakiniku Suehiro</b> 炭火焼肉 寿恵比呂 3-3-10 Kinshi <b>CASUAL DINING</b></p>	<p><b>27 Soba no sato Mitsumasa</b> そばの里 みつまさ 4-20-4 Kotobashi <b>NOODLES</b></p>
<p><b>8 MOMOENKA</b> 百宴香 4-2-1 Taihei <b>CASUAL DINING</b></p>	<p><b>18 LITTLE SAKE SQUARE</b> リトルサケスクエア 3-3-9-3F Kinshi <b>JAPANESE</b></p>	<p><b>28 ZAKU</b> 作 4-21-6 Kotobashi <b>JAPANESE</b></p>
<p><b>9 SOMEN</b> 双麺 1-4-10 Kinshi <b>NOODLES</b></p>	<p><b>19 Menya Saichi</b> 麺や 佐市 4-6-9 Kinshi <b>NOODLES</b></p>	<p><b>29 Kumamoto Dining Kitchen Basashi Izakaya</b> 熊本ダイニングキッチン 馬刺し居酒屋 4-21-6-1F Kotobashi <b>JAPANESE</b></p>
<p><b>10 Yoshoku É ITALIANO TERZO 3</b> 洋食&amp;イタリアン テルツォ3 1-5-9 Kinshi <b>CASUAL DINING</b></p>	<p><b>20 Bistro Jitan</b> ビストロジタン 4-14-9 Kinshi <b>CASUAL DINING</b></p>	<p><b>30 Seafood Restaurant &amp; Bar MARU</b> 海鮮居酒屋 M-A-R-U 4-29-15 Kotobashi <b>JAPANESE</b></p>

If you are craving world cuisine...



No Pork  
 Free Wi-Fi  
 Muslim-friendly menu available  
 Vegetarian dishes available

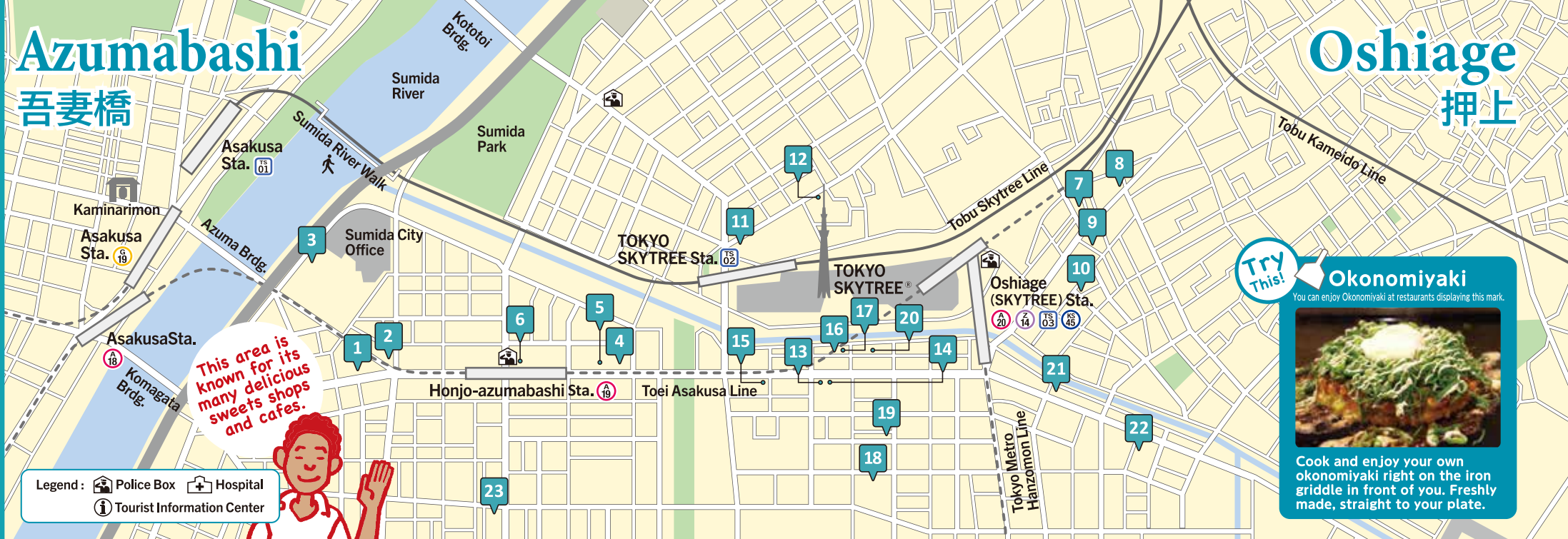
Thai food      South Indian food      Halal Chinese food      Italian food

# Azumabashi

吾妻橋

# Oshiage

押上



Legend: Police Box Hospital Tourist Information Center

This area is known for its many delicious sweets shops and cafes.

**Try This!** **Okonomiyaki**  
You can enjoy Okonomiyaki at restaurants displaying this mark.

Cook and enjoy your own okonomiyaki right on the iron griddle in front of you. Freshly made, straight to your plate.

- |  |  |   |
|--|--|---|
| <p><b>1</b> Chocolatier KAWAJI<br/>ショコラティエ 川路<br/>1-7-12 Azumabashi<br/><b>SHOPS</b> </p>                        | <p><b>7</b> SISIMARU<br/>ししまる<br/>1-16-7 Oshiage<br/><b>JAPANESE</b> </p>                    | <p><b>13</b> Narihira Kimuraya<br/>業平 キムラヤ<br/>1-10-4 Narihira<br/><b>SHOPS</b></p>                   |
| <p><b>2</b> Haraniwa Komachi<br/>はらにわ小町<br/>1-19-8 Azumabashi<br/><b>CASUAL DINING</b></p>                       | <p><b>8</b> Horumon Kazu<br/>ホルモン 和<br/>1-18-6 Oshiage<br/><b>CASUAL DINING</b> </p>         | <p><b>14</b> OIMO<br/>御宇 -OIMO-<br/>1-10-5 Narihira<br/><b>SHOPS</b> </p>                             |
| <p><b>3</b> Quebom! Riverside Café e Bar<br/>キボン! リバーサイド カフェ エ バー<br/>1-23-8-1F Azumabashi<br/><b>CAFES</b> </p> | <p><b>9</b> Soba Yuuzen Ichirikiya<br/>そば遊膳 いちりきや<br/>1-20-8 Oshiage<br/><b>NOODLES</b> </p> | <p><b>15</b> Mirindo<br/>みりん堂<br/>1-13-7 Narihira<br/><b>SHOPS</b> </p>                               |
| <p><b>4</b> Kodawari Tonkatsu Katsuki Tei<br/>こだわりのとんかつ かつき亭<br/>3-6-15 Azumabashi<br/><b>JAPANESE</b></p>       | <p><b>10</b> TASxCOFFEE<br/>タスココーヒー<br/>1-27-1 Oshiage<br/><b>CAFES</b> </p>                 | <p><b>16</b> Panda Juice<br/>パンダジュース<br/>1-22-4 Narihira<br/><b>CAFES</b> </p>                        |
| <p><b>5</b> Okonomiyaki・Monjayaki CHICO<br/>お好み焼き・もんじゃ焼き チコ<br/>3-6-16 Azumabashi<br/><b>JAPANESE</b></p>        | <p><b>11</b> Shunmidokoro FUJISE<br/>旬味処 ふじせ<br/>2-1-1-113 Oshiage<br/><b>JAPANESE</b> </p>  | <p><b>17</b> Handmade Baked Sweets Shop<br/>手作り焼き菓子の店 オリーブの木<br/>1-22-4 Narihira<br/><b>SHOPS</b></p> |
| <p><b>6</b> Kappou Tonbo<br/>割烹 とんぼ<br/>3-7-17 Azumabashi<br/><b>JAPANESE</b> </p>                               | <p><b>12</b> Cafe Pa-Pa-San<br/>カフェ 883<br/>2-5-4 Oshiage<br/><b>CAFES</b></p>               | <p><b>18</b> UNCHAIN DINER<br/>アンチェーン ダイナー<br/>2-5-7 Narihira<br/><b>CASUAL DINING</b> </p>           |

See more information on restaurants in Azumabashi/Oshiage here.



- |  |   |
|--|---|
| <p><b>19</b> Shigeno Coffee Koubou<br/>しげの珈琲工房<br/>2-11-4 Narihira<br/><b>CAFES</b></p>                      | <p><b>21</b> Mr.Bakeman<br/>ミスターベイクマン<br/>4-18-16 Narihira<br/><b>CAFES</b></p>         |
| <p><b>20</b> Oyster Market Kaki Ichiba<br/>オイスターマーケット 牡蠣市場<br/>2-19-4 Narihira<br/><b>CASUAL DINING</b> </p> | <p><b>22</b> Oshiage YOSHIKATSU<br/>押上 よしかつ<br/>5-10-2 Narihira<br/><b>JAPANESE</b></p> |

No Pork Free Wi-Fi Muslim-friendly menu available Vegetarian dishes available

If you are craving sweets...



Chocolate      Roasted sweet potatoes      Cake      Yoshoku

.....  
**Yoshoku**  
Japanese style Western cuisine

Unlike washoku, traditional Japanese cuisine recognized as a UNESCO Intangible Cultural Heritage, yoshoku refers to Western dishes that have evolved uniquely in Japan. Since rice is a staple in Japanese diets, many Western-inspired dishes have been adapted to pair well with it. Yoshoku features a variety of ingredients such as meat, fish, cheese, and spices, prepared using diverse cooking methods. Dating back to the late 1800s, it was once considered high-end cuisine reserved for the wealthy. Over time, it became popular among the general public. Today, yoshoku includes a wide range of dishes such as omurice (rice omelet), hamburger steak, pasta, and sandwiches.

# Yahiro/Kyojima

八広 / 京島



**Try This! Soba**  
You can enjoy Soba at restaurants displaying this mark.

Soba is Japan's original fast food. You can enjoy it either hot or cold.

Legend : Police Box Hospital Tourist Information Center

See more information on restaurants in **Yahiro/Kyojima** here.

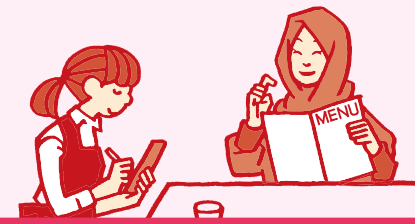


- |   |  |  |
|---|--|--|
| <p><b>1</b> cafe POKA POKA<br/>カフェ ポカポカ<br/>5-32-9 Yahiro<br/>CASUAL DINING</p> | <p><b>6</b> cafe Norakuro<br/>café のらくろ<br/>3-54-10 Kyojima<br/>CAFES</p>        | <p><b>10</b> Everest Kitchen<br/>エベレストキッチン<br/>3-23-7 Bunka<br/>CASUAL DINING</p>                  |
| <p><b>2</b> Sobaman<br/>そば万<br/>5-30-9 Yahiro<br/>NOODLES</p>                   | <p><b>7</b> SEVEN'S CAFE<br/>セブンス カフェ<br/>3-52-2 Kyojima<br/>CAFES</p>           | <p><b>11</b> Kitchen KAMEYA youshokukan<br/>キッチンカメヤ 洋食館<br/>2-1-11 Tachibana<br/>CASUAL DINING</p> |
| <p><b>3</b> YUDEN CAFÉ<br/>油田カフェ<br/>3-39-5 Yahiro<br/>CAFES</p>                | <p><b>8</b> Wagashi Dokoro Nagashima<br/>和菓子処 ながしま<br/>1-1-5 Bunka<br/>SHOPS</p> | <p><b>12</b> WADOKORO KANAZAWA<br/>和処 かなざわ<br/>3-20-4 Tachibana<br/>NOODLES</p>                    |
| <p><b>4</b> Torisho<br/>鳥正<br/>3-21-7 Kyojima<br/>SHOPS</p>                     | <p><b>9</b> SPICE Cafe<br/>スパイスカフェ<br/>1-6-10 Bunka<br/>CASUAL DINING</p>        |  |
| <p><b>5</b> Kobachiya<br/>こばち屋<br/>3-49-17 Kyojima<br/>SHOPS</p>                |  |  |
- No Pork Free Wi-Fi Muslim-friendly menu available Vegetarian dishes available

Stroll through the area's shopping streets and dine like a local.

.....  
**What you need to know before entering a Japanese restaurant.**

- At Izakaya (Japanese-style pubs), sometimes there are mandatory starters. They are called "Oto-shi". Oto-shi are a part of Japanese culture. Many Japanese Izakaya charge you for these dishes.
  - If you are late for your reservation, please call the restaurant.
  - Many casual eateries do not accept credit cards. Check with the cashier before you order.
  - Tipping is not required.
  - Items on the menu are usually single-person servings. Please order accordingly.
  - Many restaurants do not offer a box for leftovers.
  - Please flush all the toilet paper that you have used.
  - Smoking rules vary from restaurant to restaurant. Please inquire about the rules in each new place.
- \*You may not smoke on the street.



# Kanegafuchi Mukojima

鐘ヶ淵 / 向島

**Try This! Sushi**  
You can enjoy Sushi at restaurants displaying this mark.



Try eating a variety of toppings, such as tuna, squid, shellfish, and sea urchin.



North of TOKYO SKYTREE, hidden among the old town streets, you'll find charming bars and cafes.

Legend: Police Box Hospital Tourist Information Center

See more information on restaurants in Kanegafuchi/Mukojima here.



<p><b>1</b> Kisoba Chouhei きそば 長平 1-5-12 Sumida  <b>NOODLES</b></p>	<p><b>8</b> Rushana-tou in Umi no ie るしやな島 in 海の家 3-36-7 Higashimukojima <b>JAPANESE</b></p>	<p><b>14</b> Ikkenny cafe ikka 一軒家カフェ ikka 3-6-5 Mukojima <b>CAFES</b></p>
<p><b>2</b> Higashi Mukojima Coffee Shop 東向島珈琲店 1-34-7 Higashimukojima <b>CAFES</b></p>	<p><b>9</b> Restaurant Hatoya レストラン鳩家 3-37-7 Higashimukojima <b>CASUAL DINING</b></p>	<p><b>15</b> Manmaru まんまる 3-31-14 Mukojima <b>CAFES</b></p>
<p><b>3</b> Spice Bar Nekoroku スパイスバル 猫六 2-14-2 Higashimukojima <b>BARS</b></p>	<p><b>10</b> Ipcress Lounge イブクレス・ラウンジ 1-11-11 Mukojima <b>BARS</b></p>	<p><b>16</b> YAKINIKU AKARENGA 焼肉 赤煉瓦 4-8-1 Mukojima <b>CASUAL DINING</b></p>
<p><b>4</b> Bar Bee バービー 2-20-6 Higashimukojima <b>BARS</b></p>	<p><b>11</b> LAND_A ランドエー 1-2-4 Mukojima <b>CASUAL DINING</b></p>	<p><b>17</b> Wine shop and Bar OSIZU Wine shop &amp; bar お静 5-17-7 Mukojima <b>BARS</b></p>
<p><b>5</b> Cafe sabutake カフェ さぶたけ 2-31-17 Higashimukojima <b>CAFES</b></p>	<p><b>12</b> UOSAI 魚さい 2-2-10 Mukojima <b>JAPANESE</b></p>	<p><b>18</b> MARUTSUNE SUSHI 丸常船 5-30-16 Mukojima <b>JAPANESE</b></p>
<p><b>6</b> Café Sucre 自家焙煎珈琲専門店 カフェ シュクレ 2-31-20 Higashimukojima <b>CAFES</b></p>	<p><b>13</b> Old Town Style Japanese Kazusaya 下町割烹上総屋 2-2-10 Mukojima <b>JAPANESE</b></p>	<p><b>19</b> Sweet Rose スイートローズ 5-50-9 Mukojima <b>JAPANESE</b></p>
<p><b>7</b> Trattoria I Viaggiatori トラットリア イ ヴィアッジアトーリ 3-19-9 Higashimukojima <b>CASUAL DINING</b></p>	<p> No Pork  Free Wi-Fi  Muslim-friendly menu available  Vegetarian dishes available</p>	

## If you want to have a fun night out ...

Wine and Monja

Mojito

Bar

## Take a break with wagashi

Japan has a rich tradition of wagashi, delicate Japanese sweets. Some are inspired by seasonal flowers, while others include popular treats like dango (rice dumplings) and dorayaki (red bean-filled pancakes). Wagashi pairs beautifully with Japanese green tea. Enjoying wagashi in your hotel room is a great way to experience a traditional Japanese moment.

