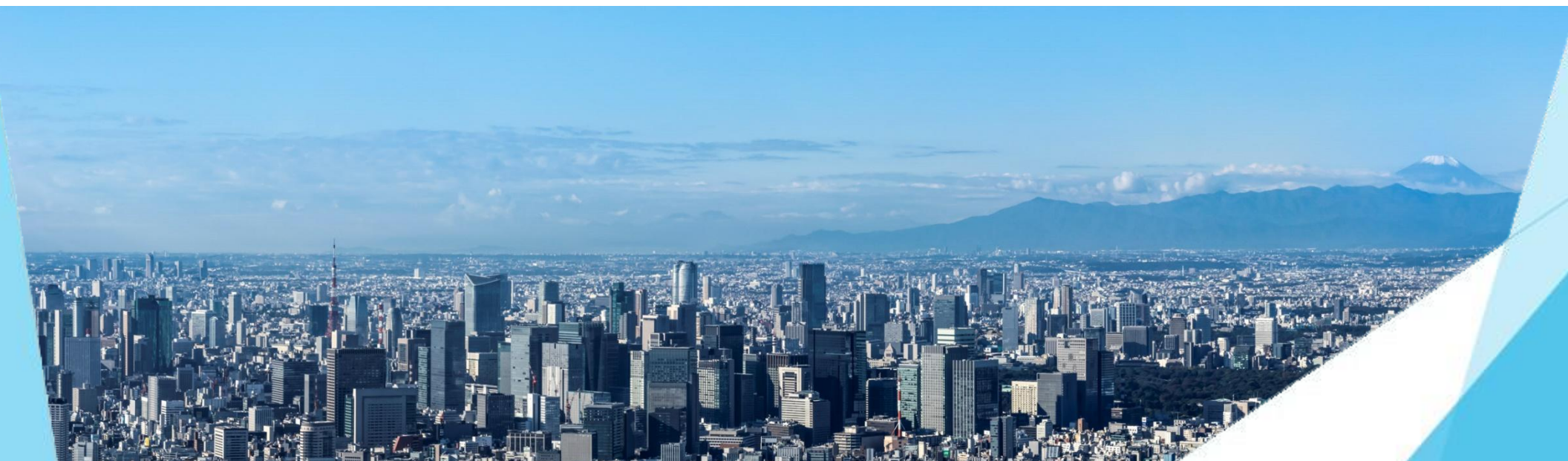


EAST TOKYO

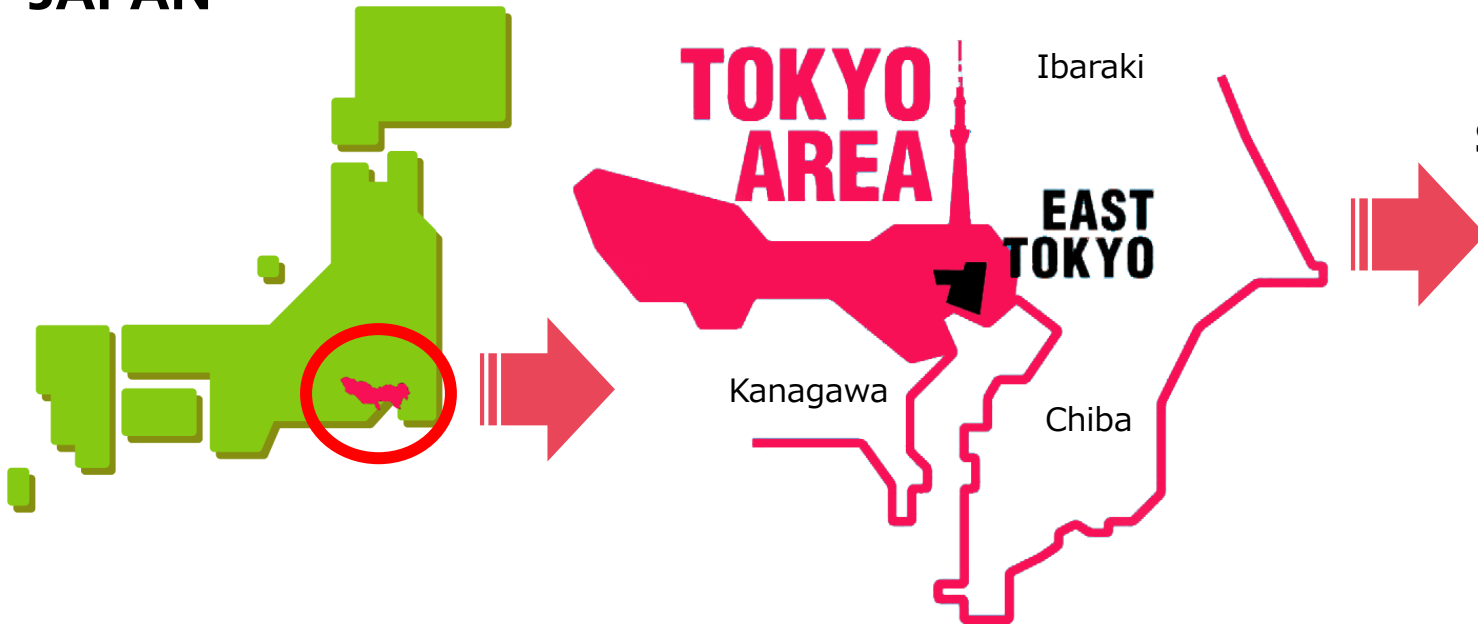
TOKYO SKYTREE® • Taito City • Sumida City • Koto City



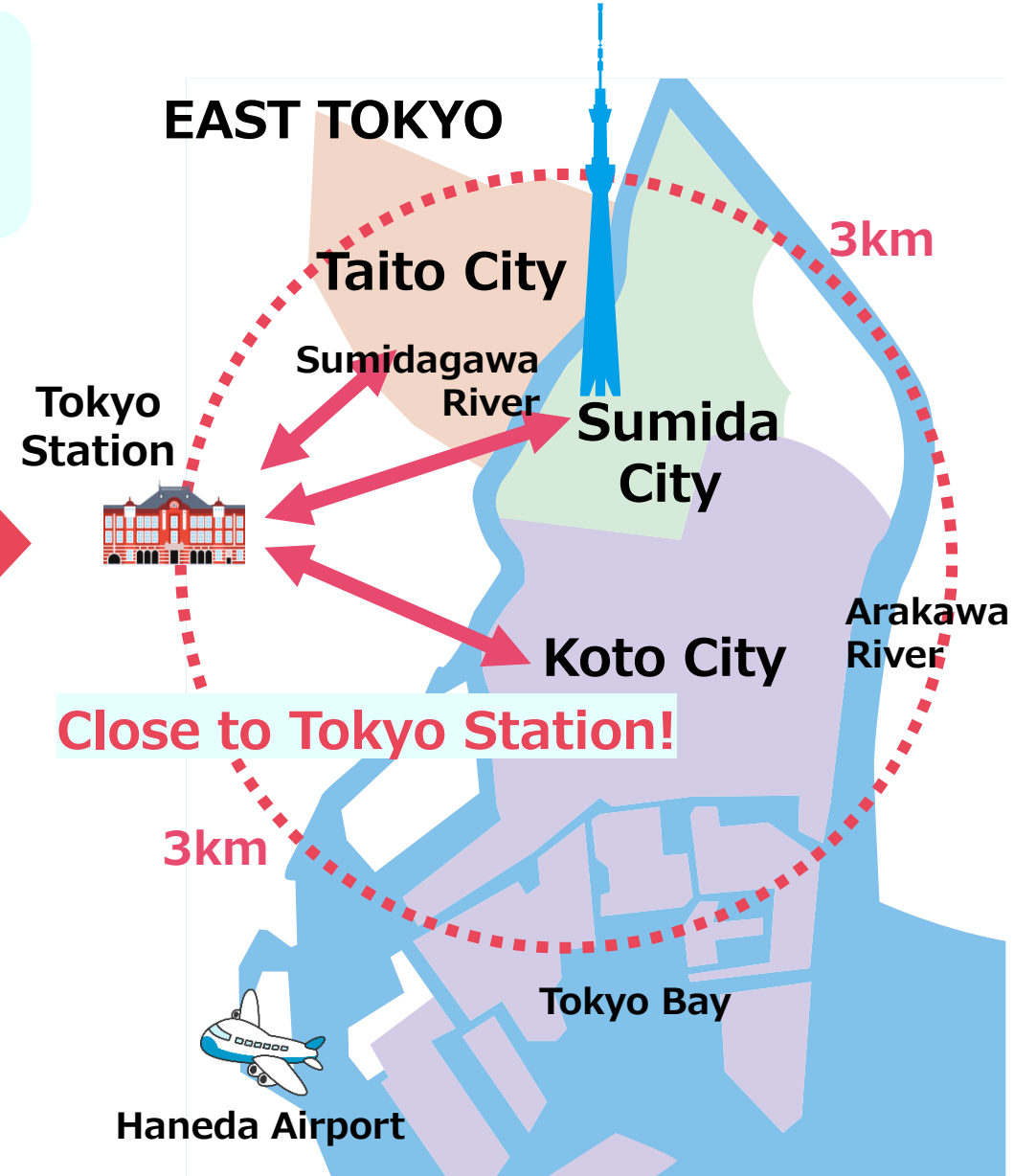
EAST TOKYO

Charming area in the downtown area of
Tokyo's East Side "East Tokyo"

JAPAN



The Tokyo East area is easily accessible
by bullet train, bus or airplane!



EAST TOKYO

"EAST TOKYO" district is filled with fascinating attractions.



Ueno Park



Sumida River Fireworks Festival



SENSO-JI



KAMNARIMON



國立西洋美術館



TOKYO SKYTREE®



兩國國技館



舊安田庭園



富岡八幡宮



東京門大橋



豊洲市場

You can visit famous places in Tokyo and learn about Japanese culture around the TOKYO SKYTREE!

ACCESS

Convenient access from Haneda Airport, Narita Airport, and Tokyo Station

- Tokyo Sky Tree is 45 to 60 minutes from Haneda and Narita International Airports to EAST TOKYO.
- Direct train access to Tokyo Sky Tree from both Haneda and Narita International airports.
- Convenient access to Tokyo Station and Ueno Station, Shinkansen arrival and departure stations.
- Easy access to Shinjuku, Shibuya, Ikebukuro, Akihabara, etc.
Easy access to Tokyo Disney Resort, Yokohama, Kamakura, Nikko, etc.
- Easy access to Tokyo Disney Resort, Yokohama, Kamakura, Nikko, and other sightseeing spots in the Tokyo metropolitan area

Travel time to EAST TOKYO

Tokyo 10~15min

Haneda Airport 50min

Narita Airport 45~60min

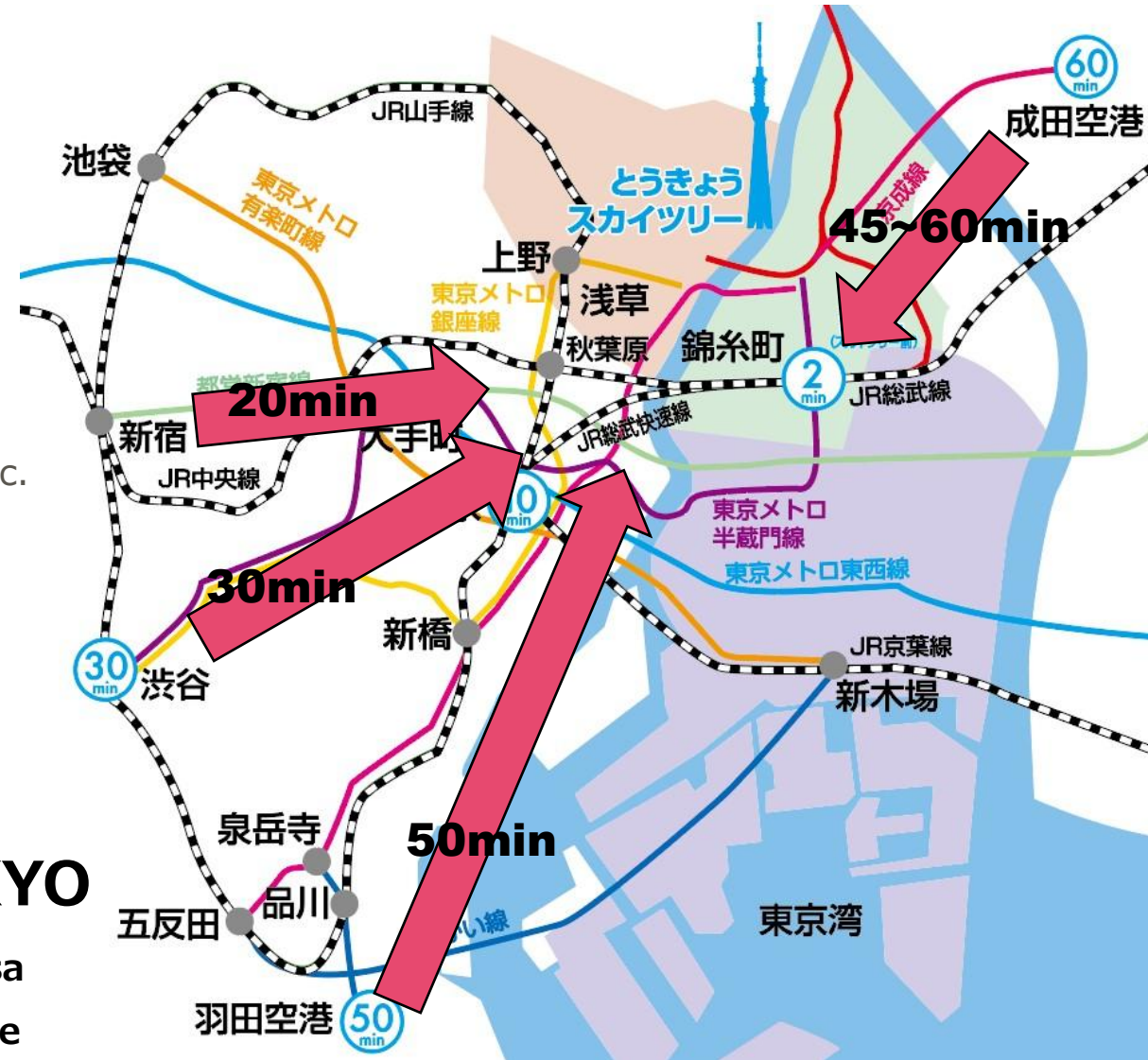
Shinjuku 20min

Shibuya 30min

EAST TOKYO

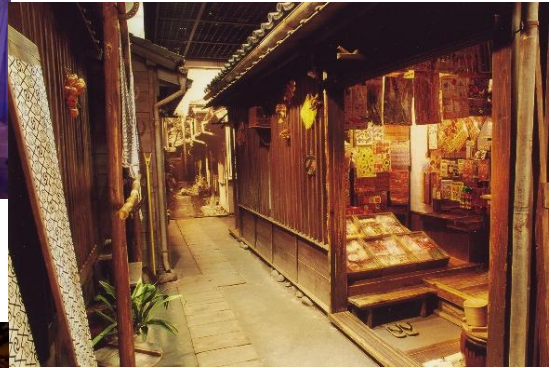
Ueno・Asakusa

Tokyo Skytree



Culture, Arts and Technology

TOKYO SKYTREE® • Museums



Price list ***Fee revisions will be implemented in**

Item		Adult	Teenager	Child
		18 years old and over	Student (Junior high/high school)	Elementary school student
			12 to 17 years old	6 to 11 years old
 Combo Ticket <u>Tembo Deck</u> + <u>Tembo Galleria</u>	Weekdays	¥3,100 (¥1,600)	¥2,150 (¥1,150)	¥1,300 (¥700)
	Holiday	¥3,400 (¥1,750)	¥2,350 (¥1,250)	¥1,400 (¥750)
 <u>Tembo Deck</u>	Weekdays	¥2,100 (¥1,100)	¥1,400 (¥750)	¥850 (¥450)
	Holiday	¥2,300 (¥1,200)	¥1,500 (¥800)	¥900 (¥450)

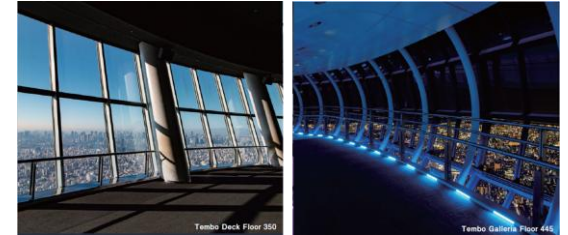
*Holidays : weekend・Japanese holidays etc.

*Children under 5 years old can enter for free. Preschoolers at 6 years old can enter for free as well. Child price still applies to primary school students at 12 years old. High school students price still applies to students who are 18 years old and over.

*Prices for visitors with disabilities are shown in parentheses.

*Please refer to the "Notes on the application of fees for visitors with disabilities" for the application of the price for visitors with disabilities.

*Please refer to the holiday pricing list for the charges of Fixed Date/Time Ticket on holidays



Museums

The National Museum of Western Art

Specializing in Western art, the museum exhibits world-famous paintings and sculptures.

It is designated as a World Cultural Heritage site.

OPEN : 9:30 a.m.-5:30 p.m.

Fridays and Saturdays: 9:30 - 20:00

*Admission ends 30 mins. before closing time

CLOSED : Mondays and 28 December - 1 January

<https://www.nmwa.go.jp/en/>



National Museum of Nature and Science

A comprehensive national museum that explores everything from natural history, such as space and dinosaurs, to the history of science and technology

OPEN: 9:30 a.m.-5:00 p.m.

*Last admission 30 minutes before closing.

CLOSED : Mondays and 28 December - 1 January

<https://www.kahaku.go.jp/english/>



EDO-TOKYO MUSEUM

Museum exhibiting the history and culture of Tokyo from the Edo period to the present day

Closed until spring 2026

<https://edo-tokyo-museum.or.jp/en/>



TOKYO NATIONAL MUSEUM

The Tokyo National Museum collects, houses, and displays a comprehensive collection of art works and antiquities from Japan as well as other Asian countries.

OPEN: 9:30 a.m.-5:00 p.m.

Open until 8:00 p.m. on Fridays and Saturdays.

*Last admission 30 minutes before closing.

CLOSED : Mondays and 28 December - 1 January

<https://www.tnm.jp>



Shitamachi Museum

Museum exhibiting the lifestyle and customs of downtown Tokyo from the Meiji to mid-Showa periods in Japan.

OPEN: 9:30 a.m.-4:30 p.m.

CLOSED : Mondays and 29 December - 3 January

<https://www.taitogeibun.net/shitamachi/>



Sumida Hokusai Museum

Exhibits works by Hokusai Katsushika. Also introduces the relationship between Sumida and Hokusai.

OPEN : 9:30 a.m.-5:30 p.m.

*Last admission 30 minutes before closing.

CLOSED : Mondays and 28 December - 1 January

<https://hokusai-museum.jp/?lang=en>



Museums・Hands-on Museum

MUSEUM OF CONTEMPORARY ART TOKYO

Museum on a wide range of contemporary art, including painting, sculpture, fashion, architecture, and design

OPEN : 10:00 a.m.-6:00 p.m.

*Tickets available until 30 minutes before closing.

CLOSED : Mondays and 28 December - 1 January

<https://www.mot-art-museum.jp/en/>



FUKAGAWA EDO MUSEUM

A museum that recreates the townscape of Fukagawa at the end of the Edo period

OPEN : 9:30 a.m.-5:00 p.m.

*Admission ends 30 mins.

before closing time

CLOSED : 2nd and 4th Mondays and 29 December - 3 January

<https://www.kcf.or.jp/fukagawa/>



Miraikan The National Museum of Emerging Science and Innovation

From simple day-to-day questions, to the latest technologies, the global environment, space exploration and life science.

National Museum of Nature and Science

OPEN : 10:00 a.m.-5:00 p.m.

CLOSED : Every Tuesday and 28 December - 1 January

<https://www.miraikan.jst.go.jp/en/>



GUS SCIENCE MUSEUM

Hands-on exhibition facility to learn about energy

OPEN : 9:30 a.m. - 5:00 p.m.

*last entry at 4:30 p.m.

CLOSED : Mondays,
New Year's holidays and facility inspection dates

<https://www.gas-kagakukan.com/>

https://www.gas-kagakukan.com/assets/file/common/guide_english.pdf?240604



teamLab★Planets TOKYO DMM

teamLab Planets is a museum where you walk through water, and a garden where you become one with the flowers. It comprises 4 large-scale artwork spaces and 2 gardens created by art collective teamLab.

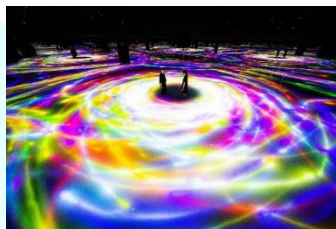
OPEN : 9:00 a.m.-10:00 p.m.

*Tuesday, December 31 9:00 a.m.-9:00 p.m.

*Last Entrance one hour before the closing time.

CLOSED : Thursday, and more

<https://teamlabplanets.dmm.com/en>



チームラボ《人と共に踊る鯉によって描かれる水面のドロ잉》
©チームラボ

The Disaster Prevention Experience-Learning Facility (SONA AREA TOKYO)

Learning the wisdom of surviving with little support after the disaster

OPEN : 9:30 a.m.-5:00 p.m.

*Admission ends 30 mins.

CLOSED : Mondays, 2nd Tuesday

<https://www.tokyorinkai-koen.jp/en/>

https://www.tokyorinkai-koen.jp/pdf/pamphlet_en_2.pdf



Experience Program

Traditional Crafts, Industry and Technology



Premium Experience

TOKYO SKYTREE

Option to learn about the structure of Sky Tree. A dedicated guide will explain about the Sky Tree. You can also enter the area at the foot of the tower, which is normally inaccessible, and take commemorative photos.

Duration: 45-60 minutes

Minimum number of participants:
10 Persons



Sumidagawa River Cruise

Cruises on the Sumida River are available on chartered boats. At night, you can enjoy the illumination of the bridges across the Sumida River. Various types of boats are available.



Traditional Craft Experience

Kintsugi Workshops

Kintsugi is an ancient Japanese technique that involves repairing broken pottery with natural materials like genuine lacquer and gold powder to make it more beautiful than ever.



Duration: 90-120 minutes
<https://kintsugi-girl.com>

Making “Kaminari Okoshi” (Japanese Sweets)

Kaminari Okoshi, a standard souvenir from Asakusa.



Duration: 30-60 minutes
<https://tokiwado.tokyo/>

EDO-MOJI Drawing Workshops

drawing letters on Japanese lanterns.



Duration: 90-120 minutes
<https://visit-sumida.jp/schooltrip/>

Amezaiku (Experience processing candy)

Amezaiku is a Japanese traditional culture in which candy is heated to about 90 degrees Celsius to soften it, and then beautifully shaped using bare hands and a pair of scissors.



Duration: 90-120 minutes
<http://www.ame-shin.com/>

Traditional Japanese paper Workshops

Paper-making experience using omikuji that have served their purpose at shrines and temples in Tokyo.



Duration: 45 minutes ~
<https://thewashi.tokyo/en/>

Edo Kimekomi Workshops

The dolls are made through the process of “Kimekomi”, which involves dressing the dolls in costumes.



Duration: 90-120 minutes
<https://visit-sumida.jp/schooltrip/>

Japanese culture and technology

Sightseeing rickshaw

Ride on a rickshaw, learn about the history of the town, and visit tourist spots.



<https://jidaiya.biz>

Watch Sumo Practice at Sumo stable

Authentic Sumo Wrestler Morning Practice Viewing in Tokyo.
optional tour

Walking with a guide in Ryogoku, a sacred place for sumo wrestlers

Duration: 90-120 minutes
<https://visit-sumida.jp/>



スモールワールドズ

Asia's largest miniature museum, spanning a total area of 7,000 square meters. It offers a wide range of hands-on programs, including workshops (hands-on craft experiences) and 3D figure creation (where you can become a miniature yourself). It also features inquiry-based programs for school groups.

<https://smallworlds.jp/zh-tw/>



Wadaiko (Japanese drum) Workshops and Museum

Today the museum holds approximately 800 drums and over 3,000 books and resources collected from around the world.

Duration: 90-120 minutes

<https://www.miyamoto-unosuke.co.jp/taikokan/>



SKY Duck

Amphibious Bus Cruise Experience Tokyo
Skytree Course, Odaiba Course, Toyosu Course available

Duration: 60-90 minutes

Price: ¥3,800

Capacity: Up to 41 people

<https://www.skybus.jp/course/?ca=2>



Fukagawa Odori

High-end kaiseki cuisine, traditional performing arts, and cultural experiences.

Duration: 60-120 minutes
Fee: Varies depending on content
Capacity: 10-40 people
<https://fukagawaodori.com/>



Tourist Attraction

TOKYO SKYTREE

Temples and Shrines



The EAST TOKYO area has many attractive spots.

寺社

Sensoji Temple and Kaminarimon Gate

Founded approximately 1,400 years ago, it is the oldest temple in Tokyo. At the Sōmon Gate (Thunder Gate) of Sensoji Temple, statues of the Wind God and Thunder God stand on either side. Nakamise Shopping Street, leading from the Thunder Gate to the main hall, is also Japan's oldest shopping street.

<https://www.senso-ji.jp/>



Ushijima Shrine

A shrine featuring a rare triple torii gate found nowhere else in Japan. The "Nureushi" statue within the grounds holds a belief: stroking the corresponding part of the cow's body while touching your own affected area is said to cure illness.

<https://www.instagram.com/ushijima145/>



Tomioka Hachiman Shrine

A historic shrine built during the Edo period. The birthplace of Edo Kanjin Sumo, featuring stone monuments related to sumo.

<http://www.tomiokahachimangu.or.jp/>



Kanei-ji Temple

The temple known as the family temple of the upper Tokugawa shogunate, which will mark its 400th anniversary in 2025. The "Eigaku Soryu" ceiling painting, one of Japan's largest and created to commemorate the 400th anniversary, is scheduled to open to the public starting December 2025.

<https://kaneiji.jp/#gsc.tab=0>



Ryogoku Ekō-in Temple

A temple founded during the Edo period. From the late Edo period, sumo tournaments for religious offerings were held at Ekoin Temple. It is also famous as a temple for animal memorial services, with a cat mound and a sea otter memorial tower within its grounds.

<https://ekoin.or.jp/>



Kameido Tenjin Shrine

A shrine revered as the deity of learning. Where visitors can also enjoy wisteria (late April) and plum blossoms (February). Its vermilion shrine buildings and arched bridge are iconic. The shrine is revered as the deity of learning.

<https://kameidotenjin-sha.jp/>



RESTAURANT

Japanese Meal



Japanese Cuisine & Market

Sanjo (Tempura)

A traditional establishment preserving the taste of Edo commoners: tempura

Business Hours: 11:00 AM to 8:30 PM
Regular Holidays: See website
Menu: Tempura from ¥1,820

<http://tempura-sansada.co.jp/index.html>



Monja OCOMO Asakusa

Enjoy the taste of downtown Tokyo's monjayaki in a stylish and comfortable space.

Business Hours: Weekdays 5:00 PM - 12:00 AM
Weekends & Holidays 11:30 AM - 12:00 AM
Group reservations available outside regular hours
Regular Holidays: None
<http://www.ocomo.jp/sphone/>



Toyosu Outer Market: Edo-Style Market (Toyosu: Thousands of Visitors)

Selling and serving fresh ingredients leveraging the advantage of being adjacent to Toyosu Market

Business Hours:
Same as Toyosu Senkyaku Banrai

<https://www.toyosu-senkyakubanrai.jp/>



Asakusa Mugitoro

Mugitoro serves its signature grated yam kaiseki cuisine.

Business Hours: Lunch 11:00 AM - 4:00 PM
Dinner 5:00 PM - 10:30 PM

olidays: See website

Menu: Weekdays: From ¥3,850

Weekends & Holidays: From ¥6,050

<https://www.mugitoro.co.jp/honten/>



-Ryogoku- EDO NOREN

A facility where you can enjoy Edo-period food culture. Serving sushi, tempura, monjayaki, and more. Featuring an open-ceiling space inspired by Edo townhouses and an authentic sumo ring.

Opening Hours: 10:00 AM to 11:00 PM

Closed: January 1st and 2nd
Facility Inspection Days (Irregular)

<https://www.jrtk.jp.t.wz.hp.transer.com/edonoren/>



Toyosu Market

Tokyo Central Wholesale Market handles the procurement and sale of fish, meat, vegetables, and other products.

Business Hours: Vary by viewing/user facility

Regular Holidays: Check the website

*Please also check the website for auction viewing (advance reservation required) and other details.

<https://www.toyosu-market.or.jp/>



SHOPPING



A "TOKYO SKYTREE TOWN" sprawling at the base of Tokyo SKYTREE.

Tradition and stylish culture combine to create an abundant community here.

Here, the new appeal of Tokyo is transmitted throughout the world.

OPEN 10:00a.m.-9:00p.m.

*However, the 6F / 7F and 30F / 31F restaurant floors are open from 11:00a.m.-11:00p.m.

The opening hours differ for some stores.

3F Solamachi Tabe-Terrace

West Yard 3F features the Food Court Solamachi Tabe-Terrace, which is made up of an open "Food Marche" surrounding seating for customers. Visitors can enjoy a variety of food, from Japanese, western and Chinese, to dessert, while taking in the food marché and festival fun.

4F Japanese Souvenirs(Gift/sundries area)

East Yard 4F is a floor with the greatest selection of souvenirs in Tokyo Skytree Town, and is made up of specialty stores that focus on Japan as it is "now." This floor is designed based on the theme of oodana merchant stores that were common in Edo towns. The traditional Japanese structural aesthetics of columns, beams, and crossbeams contribute to a unified appearance of the various stores. West Yard 4F is a zone popular among families and students on school trips, lined with official TV and entertainment stores, as well as street food.

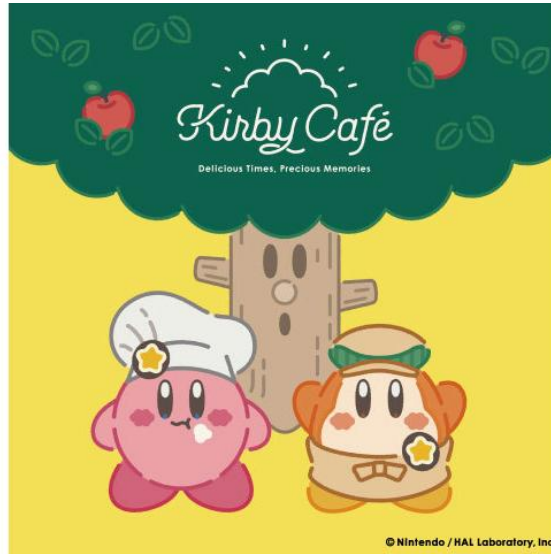
4F SUMIDA AQUARIUM

7F KONICA MINOLTA PLANETRIUM "TENKU"



TOKYO Solamachi – Animation & Manga

Character General Store



TOKYO Solamachi- Shopping

Souvenir Shops

~ Japanese brands ~



BicCamera
ビックカメラ



DAISO



~ Japanese Traditional & Cultural item ~



Onitsuka
Tiger



TOKYO mizumachi – Shopping & Eat

<https://www.tokyo-mizumachi.jp/en/>

A destination waterfront space where you can encounter the “charm of downtown”.

Hotel : WISE OWL HOSTELS RIVER TOKYO

Resutoran : LAND_A (Resutoran)

ICHIYA (Japanese confectionery)

MUYA (Bakery)

Ensensyokudo (Japanese Local Cuisine)

shake tree DINER TOKYO (Hamburger)

DEUS EX MACHINA ASAKUSA (Cafe)

LATTEST SPORTS (Cafe)

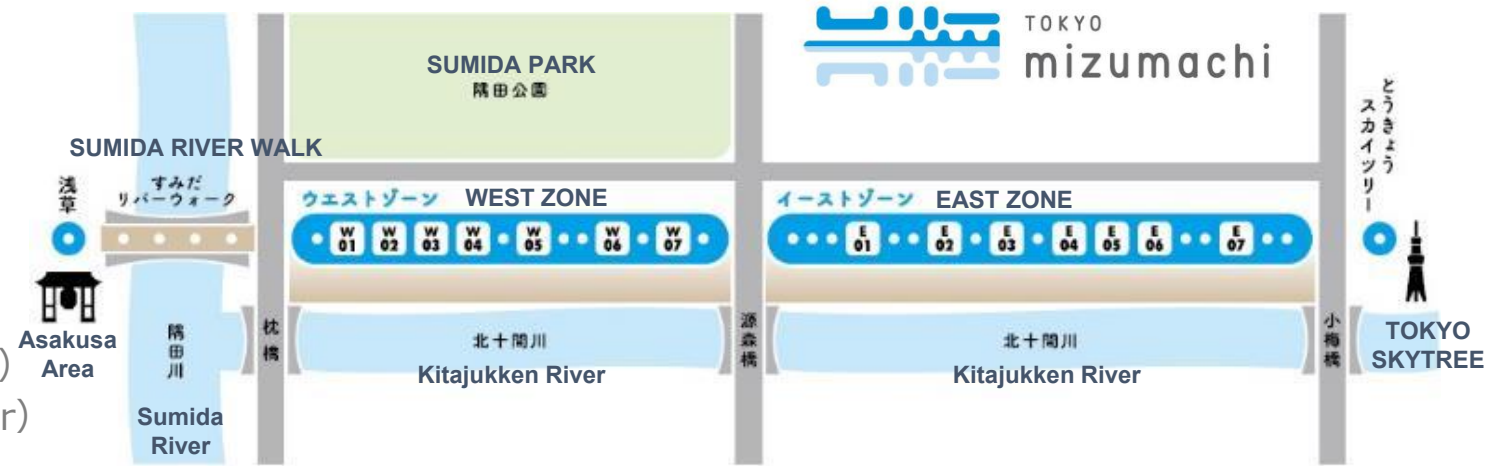
Shop : KONCENT (Designer shop)

Famly Mart (Convenience store)

Connect SUMIDA “Machidokoro”

(Products made in Sumida)

Others : WASH&FOLD (laundry service)



Shopping streets・Commercial facilities

AMEYOKO

Located along the railroad line from JR Ueno Station to Okachimachi Station, it is one of the leading shopping streets in Japan with more than 400 stores selling marine products, food, clothing, etc. in a 500-meter stretch.

ACCESS

JR・Tokyo Metro

UENO Station, OKACHIMACHI Station



<https://www.ameyoko.net>

Ninjo Fukagawa Goriyakudori Street

About 40 shops line the street, offering Japanese sweets, Amazake, Kyoto pickles, Edo accessories, and jewelry. Enjoy the liveliness of the shopping arcade. On the 1st, 15th, and 28th of every month the road bustles with even larger crowds due to the fairs that are held.

ACCESS

Tokyo Metro MONZEN-NAKACHO Station



https://koto-kanko.jp/tourism/detail_spot.php?sid=S00140

TOYOSU SENKYAKU BANRAI

Toyosu Senkyaku Banrai is a new facility that aims to carry on and further develop the unique excitement of Tsukiji. In collaboration with Toyosu Market, this destination will offer invigorating, exciting times unique to Toyosu.

OPEN

SPA 9:00a.m.~10:00p.m.

Resutoran

1F 10:00a.m.~10:00p.m.

2F 10:00a.m.~10:00p.m.

3F 10:00a.m.~8:00p.m.

(2F Souvenir Shops 10:00a.m.~6:00p.m.)

(2F MEKIKI YOKOCHO 10:00~6:00p.m.)

ACCESS

Connected to the second floor pedestrian deck at Shijo-mae Station on the Yurikamome.



<https://www.toyosu-senkyakubanrai.jp/languages/en/>

Festivals and Events

Japanese-style festivals and
seasonal events



充滿日本特有的祭典與活動。

Seasonal Events

春

spring



夏

summer



秋

autumn



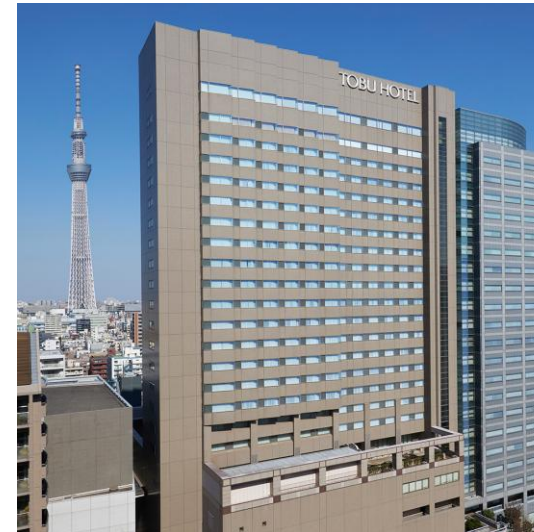
冬

winter



HOTEL

UENO • ASAKUSA • TOKYO • SKYTREE
TOKYO BAY



EAST TOKYO AREA

Hotel	Number of rooms
ASAKUSA VIEW HOTEL	326
MIMARU (Taito City 5 building・Sumida City 1 building)	30~50
HOTEL KEIHAN ASAKUSA	178
THE GATE HOTEL KAMINARIKMON	134
RICHMOND HOTEL ASAKUSA	140
RICHMOND HOTEL PREMIER ASAKUSA	270
ASAKUSA TOBU HOTEL	235



ASAKUSA VIEW HOTEL



ASAKUSA TOBU HOTEL



RICHMOND HOTEL
PREMIER ASAKUSA



RICHMOND HOTEL ASAKUSA

EAST TOKYO AREA

Hotel	Number of rooms
TOBU HOTEL LEVANT TOKYO	383
DAI-ICHI HOTEL RYOGOKU	334
RYOGOKU VIEW HOTEL	150
PEARL HOTEL RYOGOKU	260
HOTEL EAST21 TOKYO	394
Prince Hotel Tokyo Bay Shiomi	605
TOKYO TOYOSU MANYO CLUB	57
TOKYO EAST SIDE HOTEL KAIE	226
LA VISTA TOKYO BAY	582



LA VISTA TOKYO BAY



HOTEL EAST21 TOKYO



Prince Hotel Tokyo Bay Shiomi



TOKYO EAST SIDE HOTEL KAIE



TOKYO TOYOSU MANYO CLUB



TOBU HOTEL
LEVANT TOKYO



DAI-ICHI HOTEL RYOGOKU

7. 問い合わせ先

EAST TOKYO Association ("VISIT SUMIDA" TOURISM OFFICE)

If you have questions about the contents of this document, please contact one of the people listed below.

If you are contacting us via e-mail, it will go smoothly.

Arrangements are easy. We hope to see you all in "EAST TOKYO".

担当 ERIKO FUKAZAWA

TEL (+81)3-6657-5160

FAX (+81)3-6657-5166

E-Mail e-fukazawa@visit-sumida.jp

